

Welcome to SJRV, Commissioner Veronica Medina!



[Update Personal Info](#)

Contact Metro District: (970)946-8385

Contact POA: sjrvbusiness@gmail.com



[Home](#)

[Property Owner Association](#)

[Metro District](#)

[Personal Contact Info](#)

[Contact Us](#)



Welcome to San Juan River Village!

San Juan River Resort is more popularly known as San Juan River Village. Located about six miles northeast of Pagosa Springs, Colorado, the property owners' association was created under the name of San Juan River Resort; therefore officially the name must be retained.

San Juan River Village is comprised of two separate entities:

[Property Owners' Association](#)

[Metro District](#)

[Please check out our Guidebook!](#)

Questions or Concerns? Please see the [Who Do I Contact?](#) page to find out whether you need to contact the POA or the Metro District.

Community Alerts & Notices

- [Sign the POA's Petition against the Jackson Mountain Gravel Pit!](#)
- [Snow Removal Procedures](#)
- **Fire Restrictions:** Currently NO restrictions.
- **Fishing Restrictions:** Currently NO restrictions.
- [Water Quality Consumer Confidence Report for 2021](#)
- [METRO RATES & FEES](#)
- [2020 Metro Rate Study](#)
- [ONLINE BILL PAY FOR METRO DISTRICT!](#)
- [Whole House Water Filtration System Rebate Program](#)
- [Why are you flushing that down the toilet?](#)
- [POA 2021 Budget](#)
- [Archuleta County Vacation Rental 24 Hour Complaint Hotline](#)
- [Short Term Rental Application Process](#)
- [Quiet Title Information](#)
- [Results from the POA's 2019 STR Survey](#)

Agenda

- Introductions & Opening remarks (Medina / Baker)
- Project scope & NEPA
- Summary of concerns
- Alternative sites?
- Petition status
- Resident commentary
- Commissioner Medina remarks
- Closing remarks – Tony Baker, POA Board
- Next Steps

Project scope

- Community playing catch-up ...Planned Mine awareness; August, 2022
- The National Forest Service Project “*Jackson Mountain Landscape Project*” has two main elements:
 - 1) Professionally created and managed mountain bike trails. SJRV is in support and cooperation with NFS on this part of the project.
 - 2) A gravel pit for NFS and Archuleta County use. The current proposed (as of 11/10/2022) gravel pit location will be approximately 1900 feet from homes in our neighborhood.
- Mine operation:
 - The NFS has indicated “production” will be once every third year and the pit would be operated 8-5, M-F from May – Nov. (Mountain bike season) They would be running ~50 heavy gravel trucks a day. Although SJRV fully understands the need for gravel by NFS and Archuleta County, we are fully opposed to the current location.
- Joshua Peck (SJNF) has intimated that the decisions on either of these two initiatives will be independent.

Aerial visual of proposed site



View Coming Off FR37 to HWY 160 West



Exiting FR37 onto US160 Westbound towards Pagosa will contend with Eastbound US 160 trafficSee next slide

Blind Hairpin Turn Going Up FR37



To get to the mine and the Mountain Bike parking / staging area, this turn would be negotiated by all Dump Truck traffic (~ 50 per day) as well as all visitors, vehicle and perhaps bicycles.

Intersection US160 / FR37 looking East



Exiting FR37 onto US160 Westbound towards Pagosa will contend with Eastbound US 160 traffic coming around the bend, downhill @65MPH+

NEPA - The National Environmental Policy Act

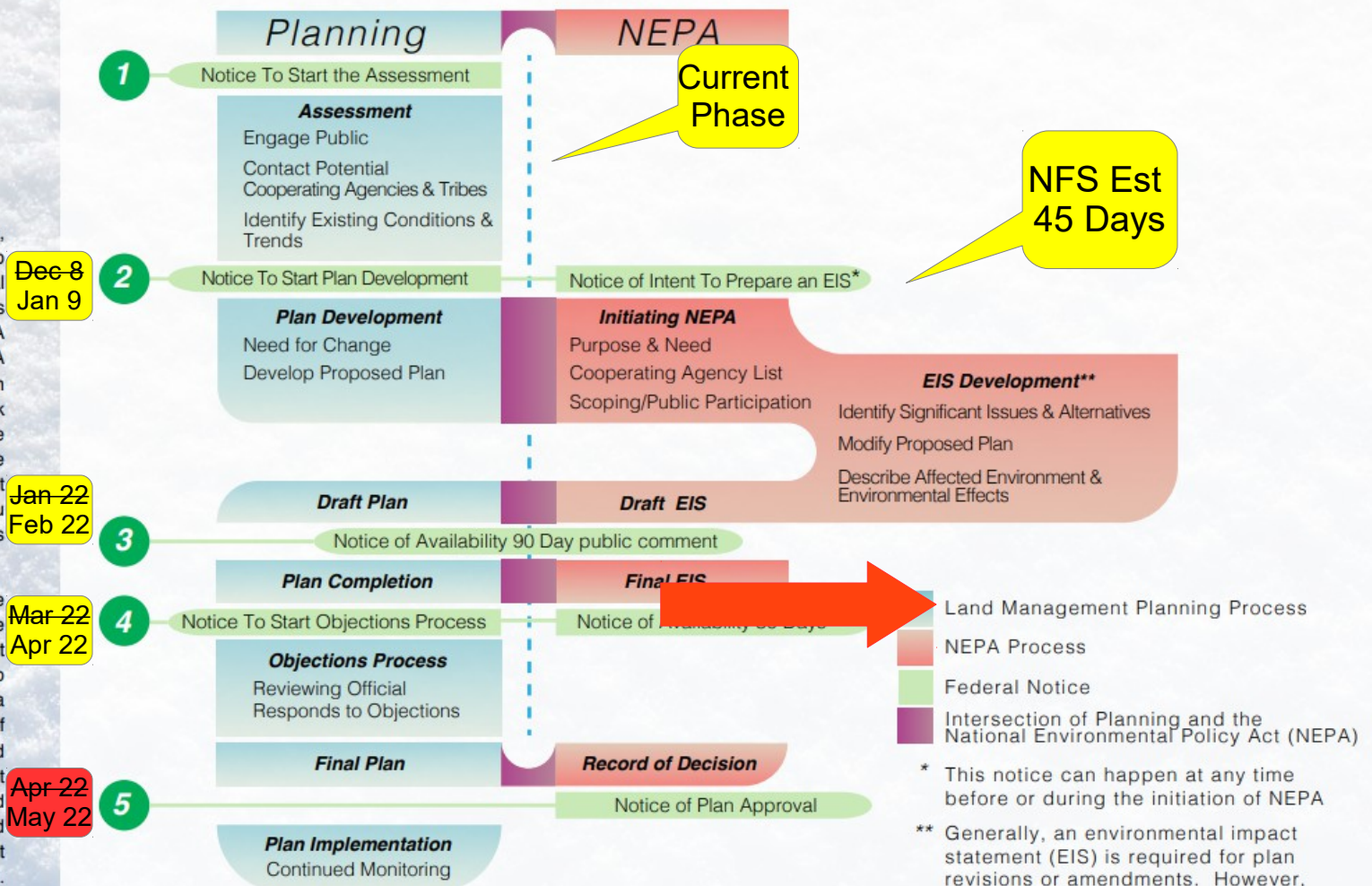
(Process begins when a federal agency develops a proposal to take a major federal action)



The Environmental Analysis and Review Process

As the Forest Service engages with the public, stakeholders, and government partners to develop plan components, it will begin the environmental analysis and review process required by NEPA, its implementing regulations, and Forest Service NEPA procedures. This is commonly referred to as "the NEPA process." The Forest Service will alert the public when it is about to begin the NEPA process and will seek comments and input at regular intervals during the process. You will be able to participate in collaborative or other engagement opportunities with the Forest Service and others during the planning process, you will have an opportunity to provide formal comments to the Forest Service during the NEPA process.

The first step in the NEPA process, known as the "scoping" period, is when you can comment on the Forest Service's preliminary proposal and say what you think are important issues for the agency to consider. After that, the Forest Service will develop a proposed plan, analyze the environmental effects of the proposed plan, as well as alternatives, in a detailed document called an environmental impact statement (EIS). The Forest Service will make the proposed plan and the draft EIS available for public review and comment. You will have at least 90 days to comment on the proposed plan and draft EIS for a plan revision.



Summary of Concerns - Current Proposed Location

- **Health (Also see Appendix)**

- Crystalline Silica generated during the mining process is a well known and documented health hazard
- Wind directions in the summertime will invariably draw the dust particle into our neighborhood; many in our neighborhood have existing conditions that this would put them at severe risk. (Proposed mountain bike trail system affected)?
- Our experience from recent logging is these trucks will pulverize the dirt / gravel roads creating a dust hazard for our community and forest users on the trails (E.g. Mountain bikers) Re: Inhalable particulate matter! (Google search: ***Inhalable Particulate Matter Health NIH***).

- **Noise**

- Due to the proximity and geography, noise from the crusher, truck's backing up, and truck movement will inevitably be amplified through our neighborhood (landscape features may amplify – A draw feeds into SJRV from proposed mine site)

- **Safety (Vehicle and Pedestrian)**

- Trucks coming down Jackson Mountain Rd will pulverize the dirt / gravel roads and create a safety hazard for those driving for recreation.
- The HWY160 Corridor that runs through our neighborhood is already a big safety issue as residents & visitors (~ 50 STRs) and residents trying to enter / exit HWY160 (Speed limit is 65mph) – NO traffic signal...Our concern is increased potential for a major and possibly fatal accident to occur. Ask the residents that live near these intersections!

- **Wildlife**

- This may disrupt the Deer and Elk population which are plentiful in this area

- **Socio-Economic**

- The value of homes in SJRV will go down approximately 25% (published studies by Lansik 2014, Hite 201) if a pit is put in the current location (**See appendix**)

-

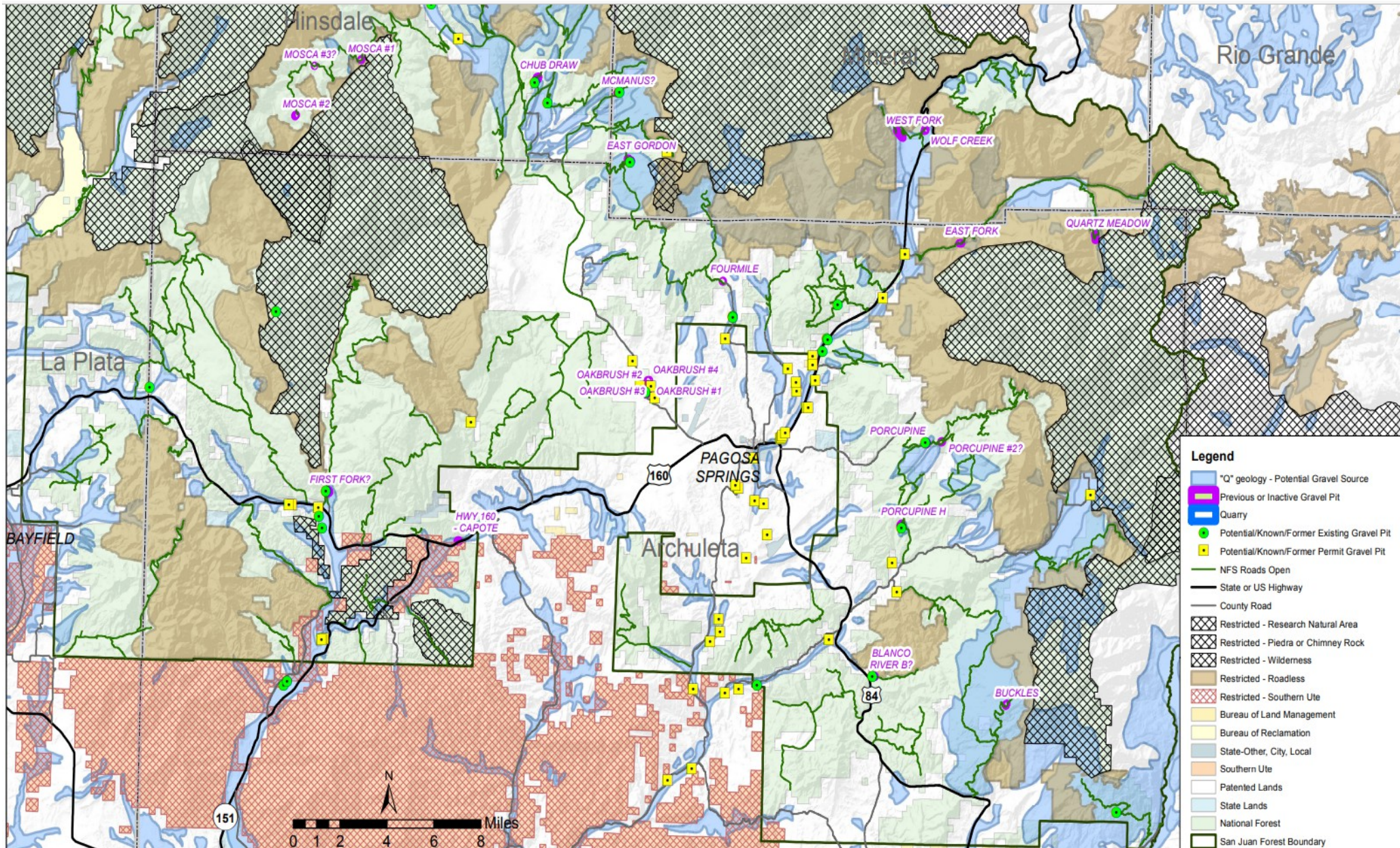
Alternative Sites? 1mm acres of SJNF!

We understand Gravel is needed!

To Select an Ideal Gravel Processing Site...

- Site criteria might include:
 - Geologically suited for sustained extraction and processing.
 - Not too close to densely developed residential areas.
- Accessible by roadways allowing for safe intermingling with regular traffic.
 - Wide roads designed to support large heavy trucks (County vs. USFS roadways)
 - Reduced transit miles on heavily used, high speed roadways (US 160, 84, etc.)
- Unlikely* to negatively impact local ecology (air, water, and habitat quality).
- Unlikely* to interfere with other (recreational) USFS land user groups.
 - * Data would be helpful for determining likelihood

Archuleta County, 2021 Survey



Potential (Alternate) Sites for Consideration

1. County Rd. 302 to USFS 662, 665, 024 Porcupine and Porcupine 2(?)
+ minimal highway miles to Pagosa Springs, mostly well-developed county road, not densely developed for residential use
2. County Rd. 500 near Taylor Canyon (-107.046, 37.163)
+ entirely on county road already used by heavy trucks, away from residential areas
3. Lower County Rd. 200, Snowball Creek A (-106.991, 37.312)
+ Mostly on County Rd. with light use,

Potential (Alternate) Sites for Consideration

4. Upper County Rd. 200 to USFS 646F, Snowball Creek B (-107.006, 37.351)

Similar advantages to lower County Rd. 200 site but extends travel on poorly maintained USFS Rd. 646F

5. USFS 647, Turkey Creek Rd. (-106.924, 37.364)

+ not close to a densely developed residential area

Petition – 250+ signatures so far

Rock Crusher / Gravel mine proposed on Jackson Mountain!

***STOP the
proposed Gravel
Mine and Crusher
Operation on
Jackson Mountain!***

As many as 50 fully loaded dump trucks per day during operations!

Trucks will share the JM forest roads with increased mountain biker vehicle traffic... (USFS Planned Jackson Mountain Bike Trail System with dozens of trails).

The SJ national forest has > 1,000,000 acres that offer potential mine sites. We believe there are safer, better locations than within a mountain bike trail system and so close to residential areas.



Wrap-up

- Resident commentary
- Commissioner Medina remarks
- Tony Baker closing remarks
- Next steps?
 - Appendix follows....

Appendix

See following slides as referenced earlier in the deck